

*FILM IN MOVEMENT*

ARTIST RESIDENCE: INTERIOR VIEW - LIVING



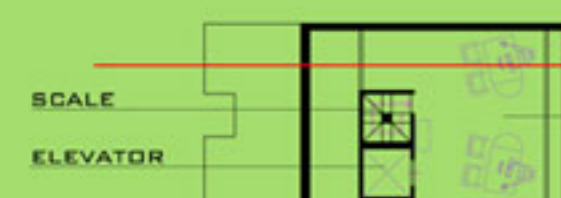
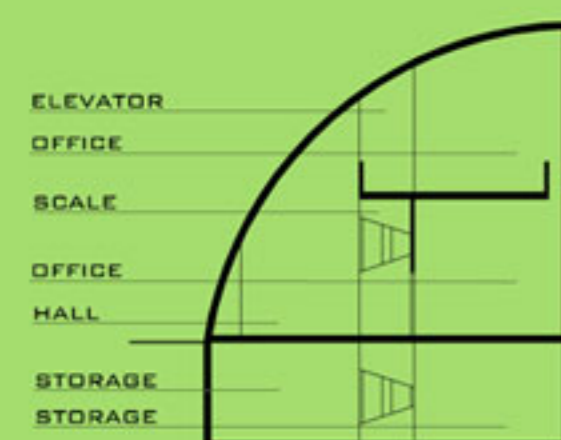
ARTIST RESIDENCE: INTERIOR VIEW - BEDROOM



### NIGHT EFFECT



DAYTIME EFFECT



OFFICE FOR  
THREE MEMBERS

PHASE 1

PHASE 2

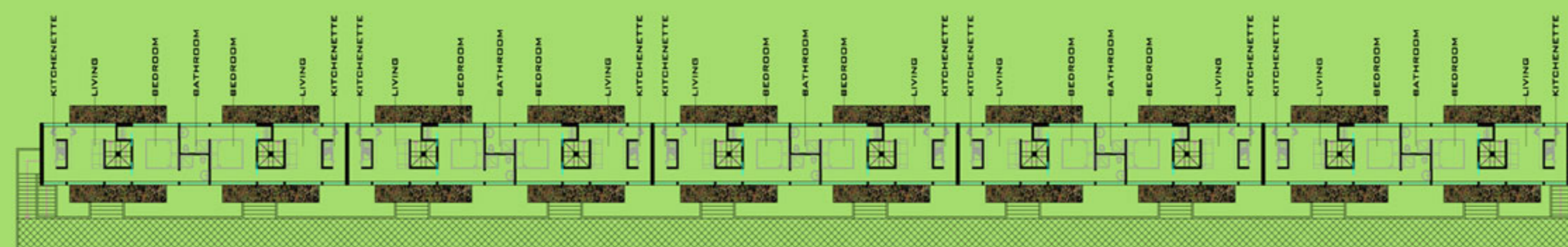
 PHASE 3

**PHASES OF MASTER PLAN**

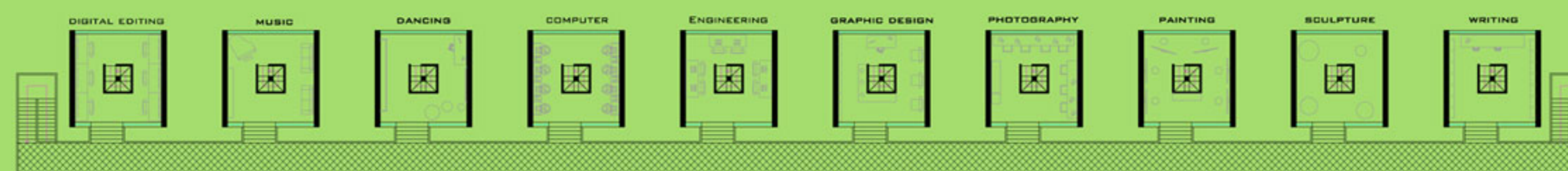
- PHASE 1**
  - A: RESIDENCES AND STUDIOS FOR 4 ARTISTS
  - B: AN OFFICE FOR THREE MEMBERS
  - C: MULTI-FUNCTIONAL SPACE
  - D: PARKING
- PHASE 2**
  - RESIDENCES AND STUDIOS FOR 6 ARTISTS
- PHASE 3**
  - PROPOSED LOCATION OF AN AMPHITHEATRE



ARTIST RESIDENCE: FILM IN MOVEMENT



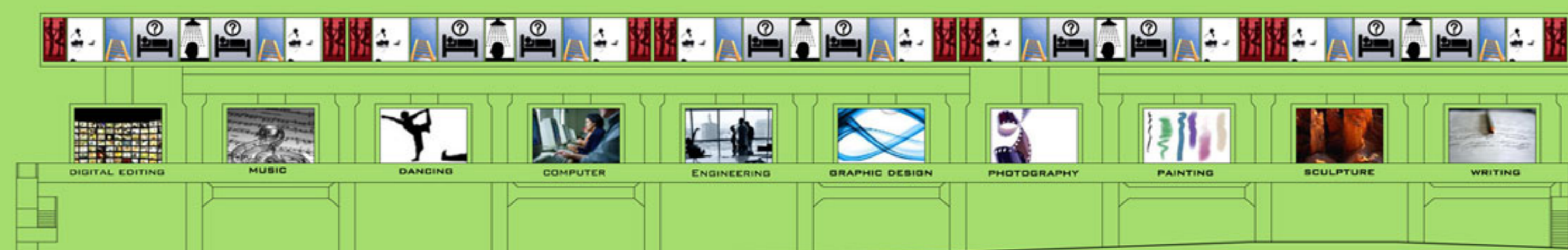
RESIDENCE'S FLOOR



ATELIER'S FLOOR



3D SECTION



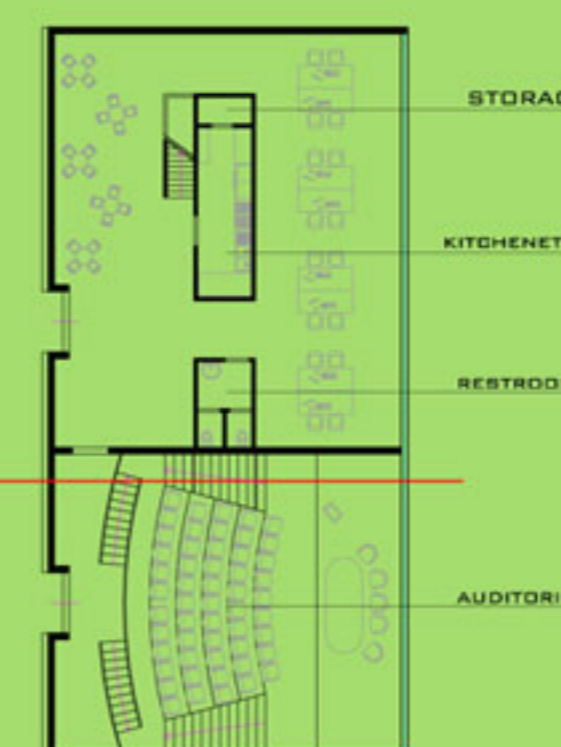
FRONTAL VIEW 1:200



Diagram illustrating the layers of a flat roof waterproofing system:

- VEGETATION
- SOIL
- DRAINAGE
- WATERPROOFING MEMBRANE
- LAYER FILTER
- LAYER SEPARATION
- VAPOUR BARRIER
- FLOOR

GREEN ROOF ON THE  
STUDIOS, ON THE  
MULTI-FUNCTIONAL  
SPACE AND ON THE  
OFFICE.



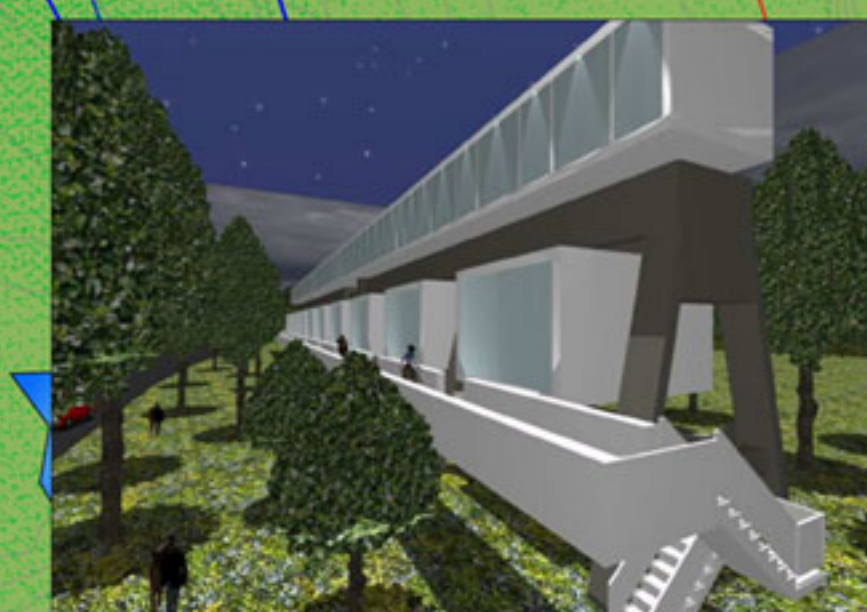
RESIDENCES AND STUDIOS FOR ARTISTS AND  
MULTI-FUNCTIONAL SPACE: EXTERIOR VIEW



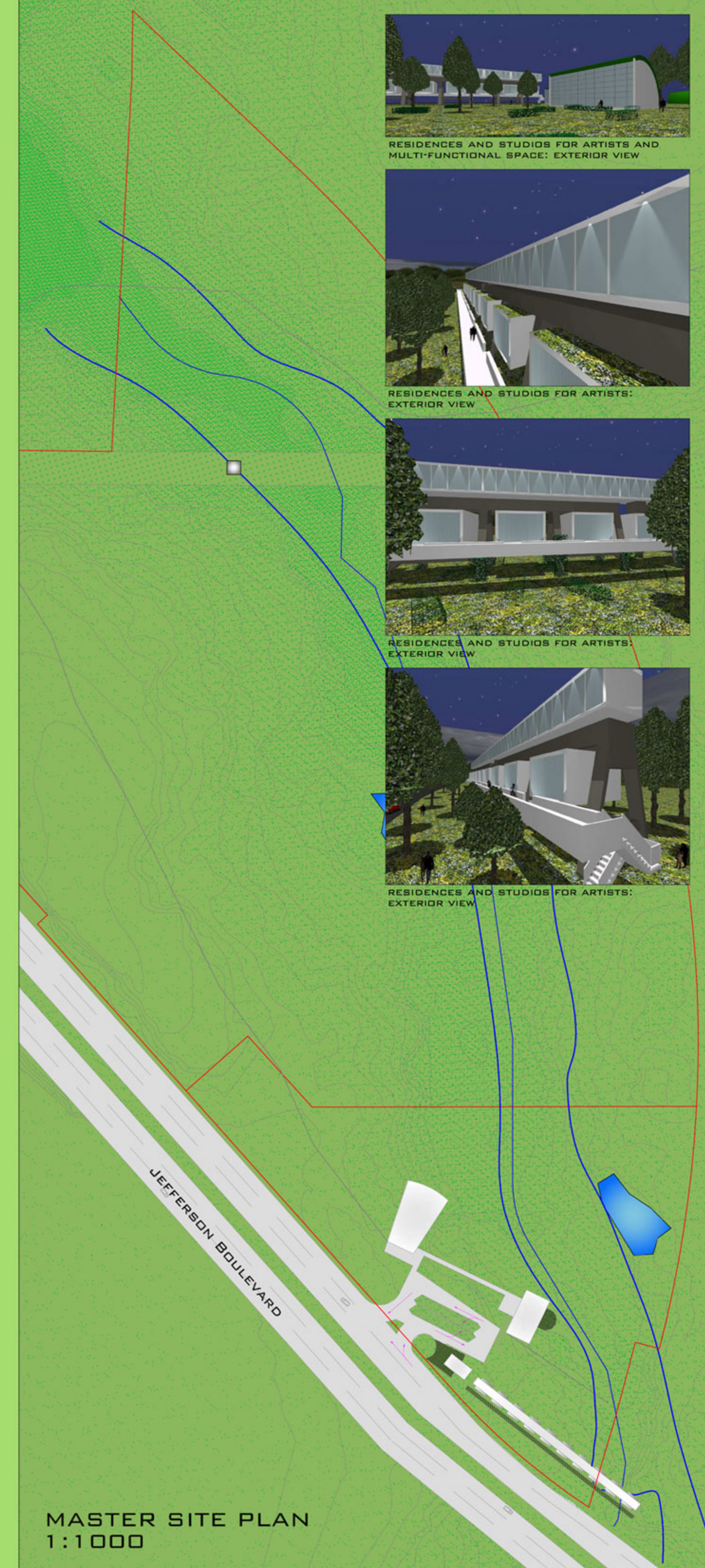
RESIDENCES AND STUDIOS FOR ARTISTS:  
EXTERIOR VIEW



RESIDENCES AND STUDIOS FOR ARTISTS:  
EXTERIOR VIEW



RESIDENCES AND STUDIOS FOR ARTISTS:  
EXTERIOR VIEW



MASTER SITE PLAN  
1:1000